

**2012 SSEC
CONFERENCE
IN
COSTA RICA
JUNE 19 – 23, 2012**



Monteverde Institute

THE SSEC IS MEETING IN COSTA RICA

June 19 – 23, 2012

Please join us!!

In collaboration with the Monteverde Institute,* the Social Science Education Consortium will have its annual meeting in Monteverde, Costa Rica, June 19-23, 2012. The conference themes are cross cultural understanding, ecology, and sustainability. The following is a preliminary schedule.

Day 1, Tuesday, June 19: Arrival in San Jose and transfer to Hotel Herradura, www.ramadaherradura.com. Rate is \$110 per night plus 13% taxes, includes breakfast. Evening orientation to the conference.

Day 2, Wednesday, June 20: After an early breakfast, bus departure to Monteverde for about a three-hour bus trip—a fantastic journey! Lunch will be served at the Monteverde Institute.

Afternoon: Keynotes on “Impacts of Tourism on Food Security” and “Sustainable Development, Social Justice, and Fair Trade”



Hotel Fonda Vela

Evening: Transfer to Hotel Fonda Vela, www.fondavela.com for dinner and relaxing evening; dinner on your own. Hotel rate – \$120 double, \$110 single, taxes and breakfast included.

Day 3, Thursday, June 21: Begin the day with a guided tour of the Cloud Forest Reserve, then complete the morning with a talk on the formation of the Women’s Artisan Cooperative, and a history of Monteverde.

Lunch: At a nearby local restaurant with a chocolate tour and sampling after lunch.

Afternoon: Visit the Children’s Eternal Rainforest, *Bosque Eterno de los Ninos* (BEN)

Evening: Documentary film, “Crack in the Golden Egg,” about the impact of development on Costa Rica, followed by a night tour of the forest.

Day 4, Friday, June 22: Begin the day with suspension bridge walk, zip line adventure, visit to coffee plantation, or other activity.

Morning: Invited presentations

Lunch: At the Monteverde Institute

Afternoon: SSEC papers and corporation meeting

Evening: Farewell dinner at the hotel

Day 5, Saturday, June 23: Early morning bus departure to San Jose airport. Participants must have scheduled mid- or late-afternoon flights, or made other arrangements for touring Costa Rica.

Conference Fee: \$400 for SSEC members; \$440 for non-members, which includes a one-year membership in the SSEC. Cancellation fee is 50% of conference fee if made 60 or more days before the conference.

Reservations for both hotels must be made by March 1, 2012. You may use the hotel web sites to make reservations.

*The Monteverde Institute (MVI) <http://mvinstitute.org/> is a member-governed Costa Rican not-for-profit association dedicated to education, applied research, and community engagement. Founded in 1986, MVI from its inception has facilitated place-based, experiential learning in education abroad, grounded in the environment, social, economic, and cultural realities of Monteverde communities. The Institute’s executive director is Jannelle Wilkins.

Note: All written papers will be considered for publication in a special volume of the International Social Studies Forum, published by Information Age Publishing.

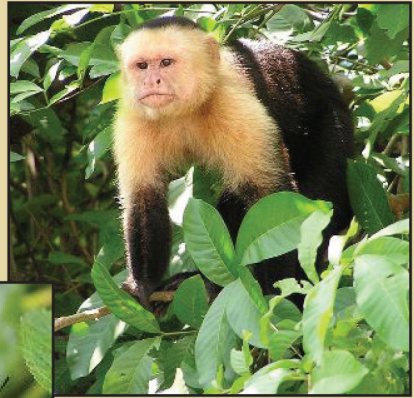


Costa Rican Coffee

To download the conference registration packet, go to the SSEC web site and click on Annual Conference.

www.soc-sci-ed-consortium.org/annualconference

Join us for the 2012 SSEC Conference in beautiful Costa Rica!



Social Science Education Consortium, Inc.
201 High Lonesome Pt., Lafayette, Colorado 80026
Phone: 303.604.6124

www.soc-sci-ed-consortium.org